



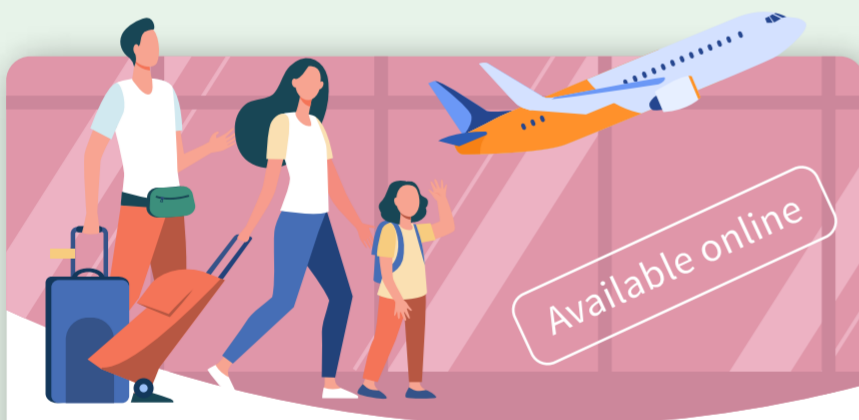
AXA INSURANCE THAILAND PRODUCT FOR OVERSEA VISITOR

DO YOU ALREADY HAVE A VALID VISA TO
ENTER THAILAND



You will need Certificate
of Entry (COE).

Visit www.coethailand.mfa.go.th

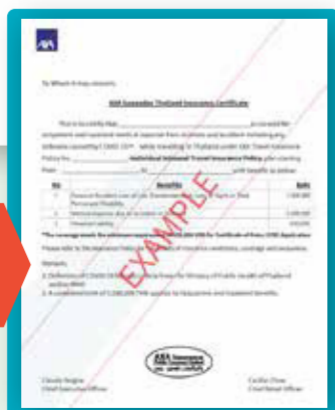


**AXA Sawasdee
Thailand Travel Insurance**

- Meet **100,000 USD** requirement
- Provide **Covid-19** certificate

Buy

Certificate
Example



Consider "Long Stay Visa O-A, O-X or STV"?

Visit www.longstay.tgia.org

and you will also need to apply for COE

Visit www.coethailand.mfa.go.th



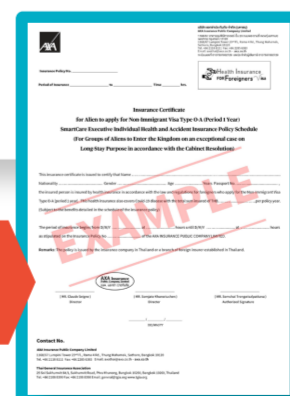
**AXA SmartCare Executive for
Long Stay Visa type O-A and STV**

- O-A and STV
Visa compliant

- Meet **100,000 USD** requirement
- Provide **Covid-19** certificate

Buy

Certificate
Example



If you would like to apply for other types of visa, please consult us at axathai@axa.co.th



AXAThailand



@AXAThailand



axathai@axa.co.th